

Wilo-Jet WJ	2
Jet WJ 202 (1~230 V)	4
Jet WJ 202 X (1~230 V)	8
Jet WJ 203 (1~230 V)	12
Jet WJ 203 X (1~230 V)	16
Jet WJ 203 X (3~230/400 V)	20
Jet WJ 204 (1~230 V)	24
Jet WJ 204 X (1~230 V)	28
Jet WJ 204 X (3~230/400 V)	32



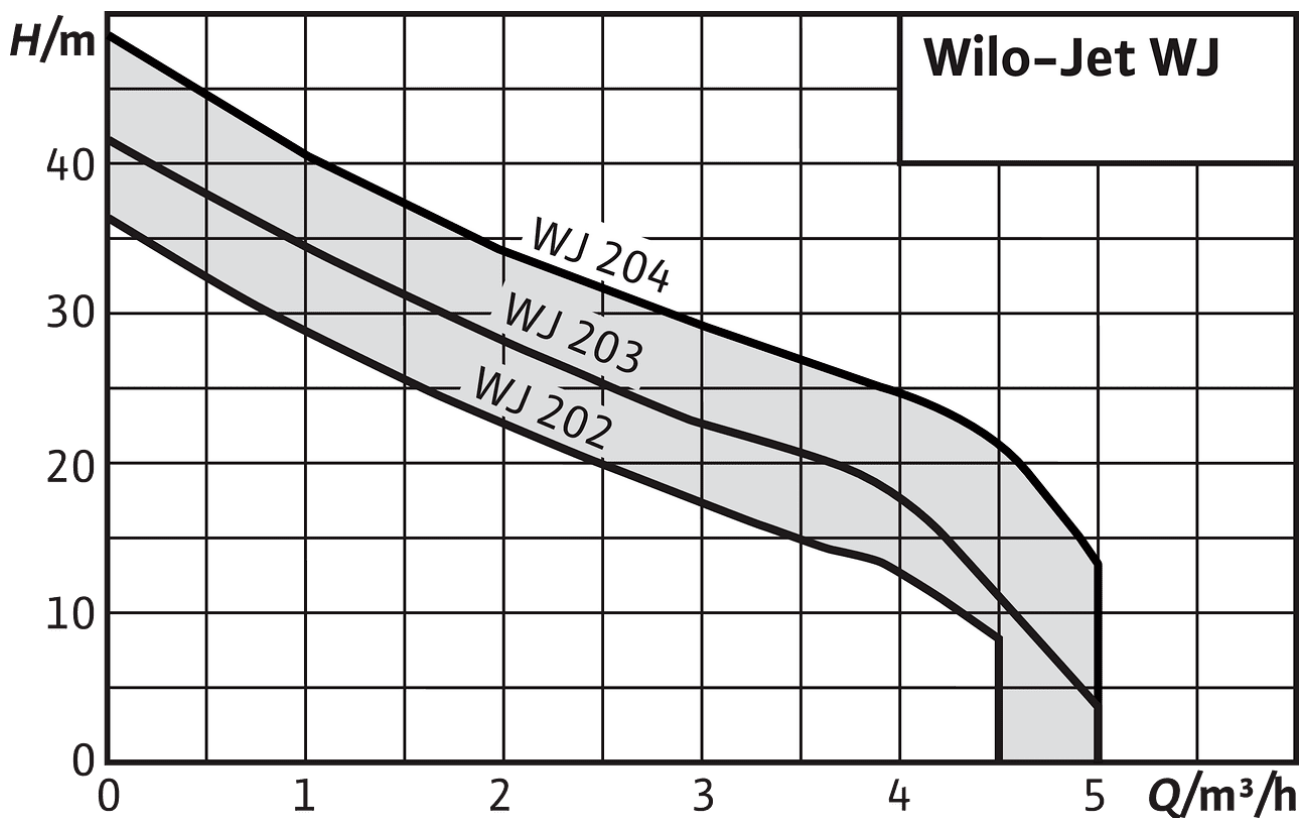
Your advantages

- > User-friendly thanks to its light weight, compact size and practical carrying handle
- > High supply guarantee due to hydraulic output, self-priming up to 8 m (also at a low flow rate)
- > Robust stainless steel construction for durable operation, impeller, shaft and housing made of AISI 304
- > IE3-IEC three-phase AC motor (≥ 0.75 kW)

Recommended services



Wilo-Live Assistant



Design

Self-priming multistage centrifugal pumps

Application

- > Pumping water from wells
- > Filling, pumping empty, transferring by pumping, irrigation and sprinkling
- > As emergency pump for overflows

Equipment/function

- > With or without carrying handle, depending on version
- > For single-phase motor (1~230V):
 - > Connection cable with plug
 - > On/off switch
 - > Thermal motor protection switch

Typekey

Example:	WJ-203-X-EM
WJ	Wilo jet pumps
2	Nominal flow rate Q in m ³ /h at optimum efficiency
03	Index for pump pressure □ Version 03 with higher pressure than version 02 □ (no indication of number of impellers!)
X	Version without carrying frame
[Space]	Portable version with carrying frame
EM	Single-phase current, 1~230 V, 50 Hz
DM	Three-phase current, 3~230/400 V, 50 Hz

Technical data

- > Mains connection 1~230 V, 50 Hz or 3~400 V, 50 Hz
- > Inlet pressure max 2 bar
- > Fluid temperature max. +5 °C to +35 °C
- > Max. operating pressure 6 bar
- > Protection class IP 44
- > Suction- and pressure-side connection G 1

Materials

- > Pump housing stainless steel 1.4301
- > Impeller made of 1.4301 stainless steel
- > Shaft made of 1.4005 stainless steel
- > Mechanical seal made of ceramic/carbon
- > Diffuser/injector made of Noryl
- > Seals made of NBR

Scope of delivery

- > Pump
- > With or without carrying handle, depending on version
- > Installation and operating instructions

Product list

Product description	Article number
Jet WJ 202 (1~230 V)	4081224
Jet WJ 202 X (1~230 V)	4081221
Jet WJ 203 (1~230 V)	4081225
Jet WJ 203 X (1~230 V)	4081222
Jet WJ 203 X (3~230/400 V)	4212734
Jet WJ 204 (1~230 V)	4144401
Jet WJ 204 X (1~230 V)	4143999
Jet WJ 204 X (3~230/400 V)	4212735



Similar to figure

Data sheet

Hydraulic data

Maximum operating pressure P_N	6 bar
Pressure port	G 1
Max. delivery head H	34 m
Min. fluid temperature T_{min}	5 °C
Max. fluid temperature T_{max}	35 °C
Min. ambient temperature T_{min}	-15 °C
Max. ambient temperature T_{max}	40 °C

Motor data

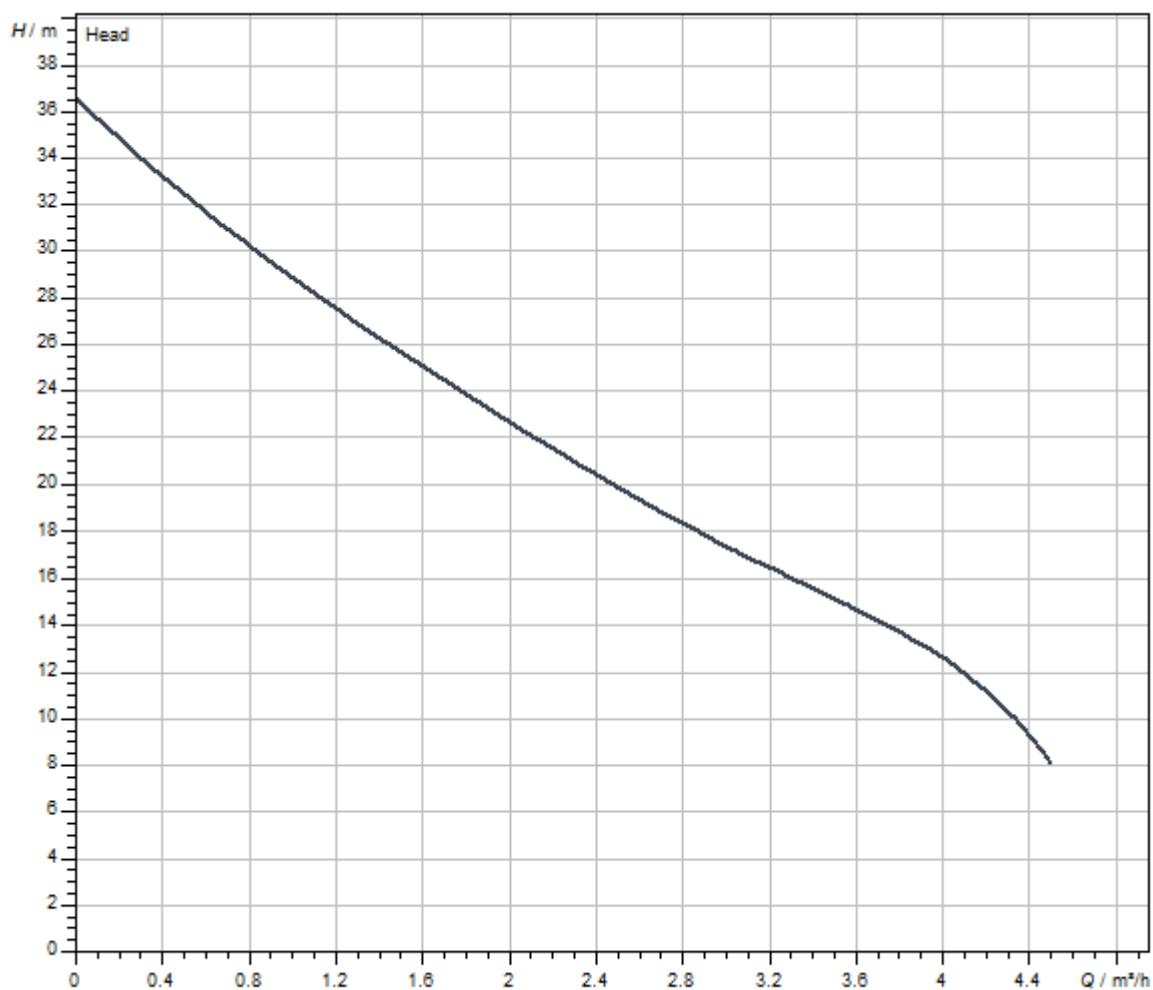
Mains connection	1~230 V, 50 Hz
Voltage tolerance	±6 %
Rated power P_2	0.55 kW
Rated current I_N	4 A
Rated speed n	2900 1/min
Insulation class	B
Protection class motor	IP44

Materials

Pump housing	Stainless steel
Shaft	Stainless steel
Shaft seal	CVPFF
Gasket material	NBR
Impeller	Stainless steel

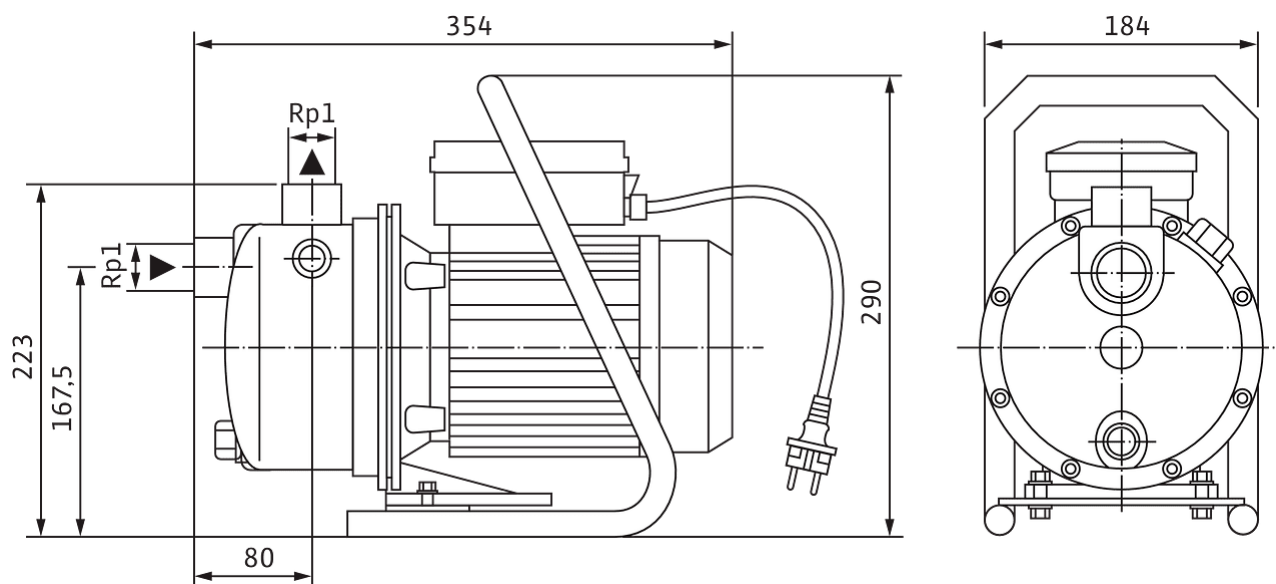
Installation dimensions

Pipe connection on the suction side DNs	G 1
Pipe connection on the discharge side DNd	G 1

Pump curves

Dimensions and dimensions drawings

Jet-WJ



Tender text

- Self-priming single stage jet pump for water supply, irrigation and rainwater re-use applications.
- Self-priming capacity up to 8m thanks to integrated Venturi system.
- The pump is easy to use thanks to its embedded ON/OFF switch.
- Wilo-WJ is supplied with integrated handle, Wilo-WJ-X is supplied without handle.
- Ready for connection thanks to its already connected 2 meters electrical cable with shock-proof Schuko plug.
- Connection via terminal box for three-phase versions.
- All parts that come into contact with the fluid are corrosion-proof.

Materials

Pump housing	Stainless steel
Shaft	Stainless steel
Shaft seal	CVPFF
Gasket material	NBR
Impeller	Stainless steel

Operating Data

Min. fluid temperature T_{\min}	5 °C
Max. fluid temperature T_{\max}	35 °C
Maximum operating pressure p	10.0 bar
Pressure port	G 1
Max. ambient temperature T_{\max}	40 °C

Motor data

Mains connection	1~230 V, 50 Hz
Voltage tolerance	±6 %
Rated power P_2	0.55 kW
Rated current I_N	4 A
Rated speed n	2900 1/min
Insulation class	B
Protection class	IP44

Installation dimensions

Pipe connection on the suction side DN_s	G 1
Pipe connection on the discharge side DN_d	G 1

Ordering information

Net weight, approx. m	9.6 kg
Brand	Wilo
Product description	Jet WJ 202 (1~230 V)
Article number	4081224



Similar to figure

Data sheet

Hydraulic data

Maximum operating pressure P_N	6 bar
Pressure port	G 1
Max. delivery head H	34 m
Min. fluid temperature T_{min}	5 °C
Max. fluid temperature T_{max}	35 °C
Min. ambient temperature T_{min}	-15 °C
Max. ambient temperature T_{max}	40 °C

Motor data

Mains connection	1~230 V, 50 Hz
Voltage tolerance	±6 %
Rated power P_2	0.55 kW
Rated current I_N	4 A
Rated speed n	2900 1/min
Insulation class	B
Protection class motor	IP44

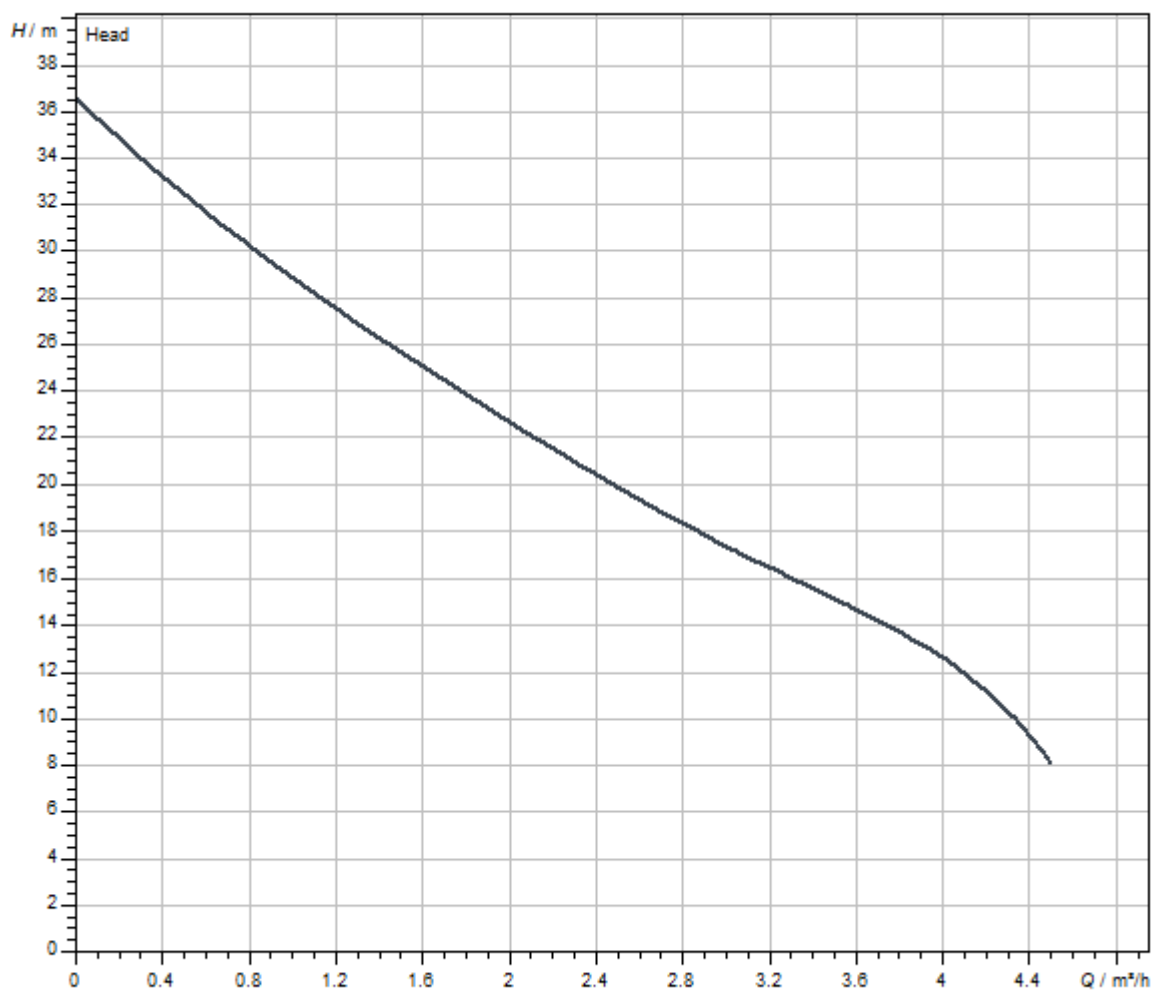
Materials

Pump housing	Stainless steel
Shaft	Stainless steel
Shaft seal	CVPFF
Gasket material	NBR
Impeller	Stainless steel

Installation dimensions

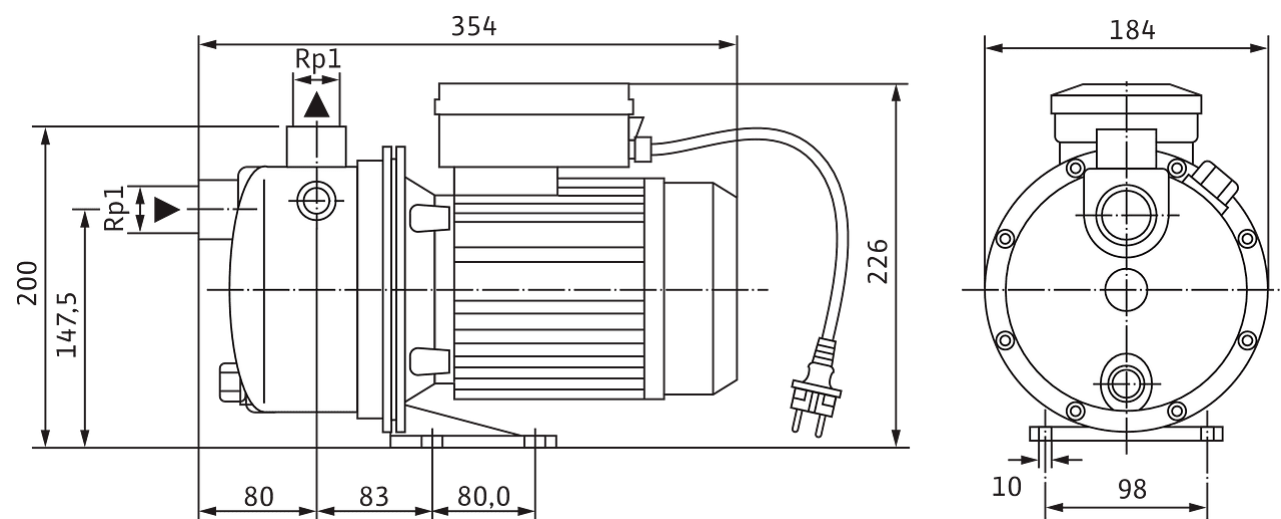
Pipe connection on the suction side DNs	G 1
Pipe connection on the discharge side DNd	G 1

Pump curves



Dimensions and dimensions drawings

Jet-WJ



Tender text

- Self-priming single stage jet pump for water supply, irrigation and rainwater re-use applications.
- Self-priming capacity up to 8m thanks to integrated Venturi system.
- The pump is easy to use thanks to its embedded ON/OFF switch.
- Wilo-WJ is supplied with integrated handle, Wilo-WJ-X is supplied without handle.
- Ready for connection thanks to its already connected 2 meters electrical cable with shock-proof Schuko plug.
- Connection via terminal box for three-phase versions.
- All parts that come into contact with the fluid are corrosion-proof.

Materials

Pump housing	Stainless steel
Shaft	Stainless steel
Shaft seal	CVPFF
Gasket material	NBR
Impeller	Stainless steel

Operating Data

Min. fluid temperature T_{\min}	5 °C
Max. fluid temperature T_{\max}	35 °C
Maximum operating pressure p	10.0 bar
Pressure port	G 1
Max. ambient temperature T_{\max}	40 °C

Motor data

Mains connection	1~230 V, 50 Hz
Voltage tolerance	±6 %
Rated power P_2	0.55 kW
Rated current I_N	4 A
Rated speed n	2900 1/min
Insulation class	B
Protection class	IP44

Installation dimensions

Pipe connection on the suction side DN_s	G 1
Pipe connection on the discharge side DN_d	G 1

Ordering information

Net weight, approx. m	8.9 kg
Brand	Wilo
Product description	Jet WJ 202 X (1~230 V)
Article number	4081221



Similar to figure

Data sheet

Hydraulic data

Maximum operating pressure P_N	6 bar
Pressure port	G 1
Max. delivery head H	43 m
Min. fluid temperature T_{min}	5 °C
Max. fluid temperature T_{max}	35 °C
Min. ambient temperature T_{min}	-15 °C
Max. ambient temperature T_{max}	40 °C

Motor data

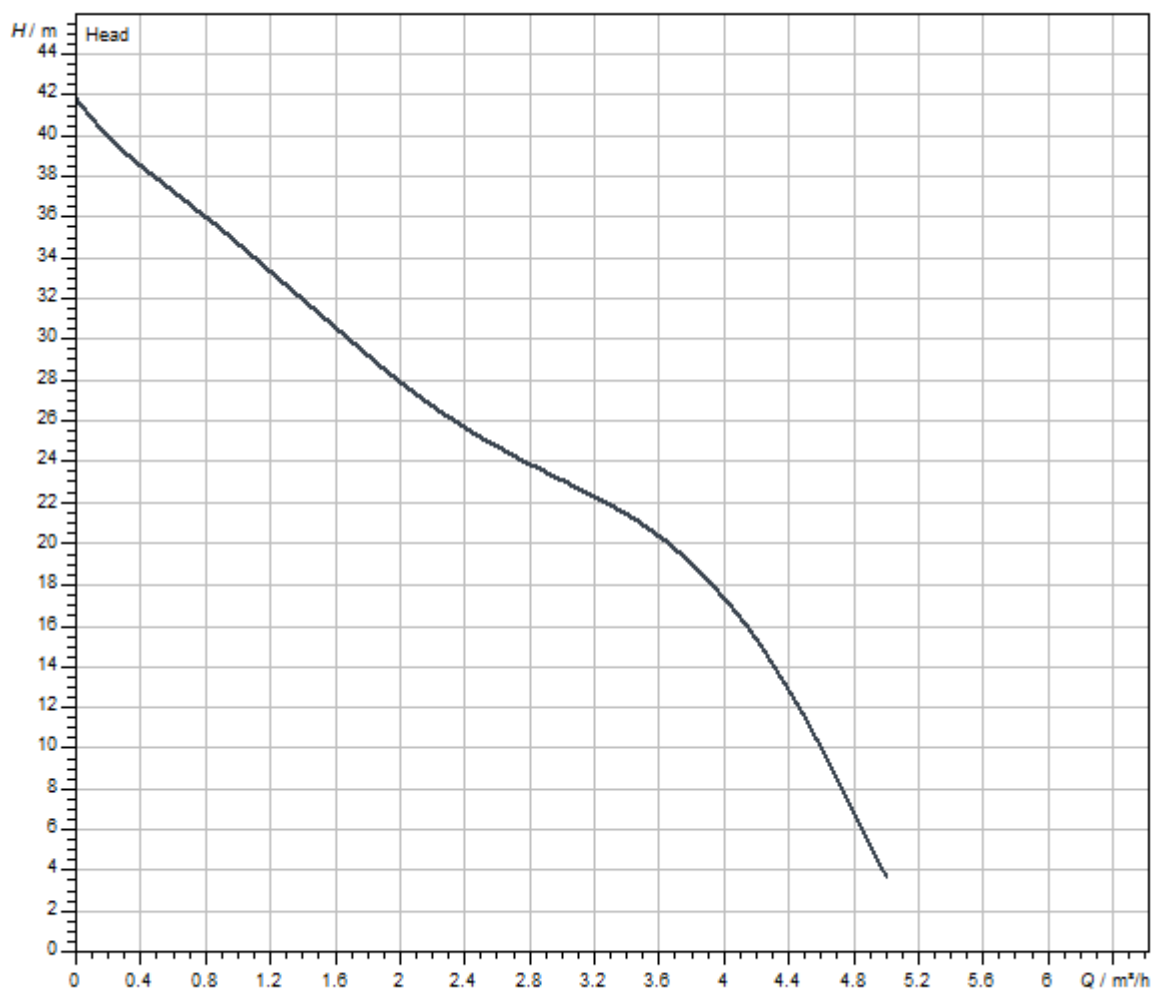
Mains connection	1~230 V, 50 Hz
Voltage tolerance	±6 %
Rated power P_2	0.75 kW
Rated current I_N	5.2 A
Rated speed n	2900 1/min
Insulation class	B
Protection class motor	IP44

Materials

Pump housing	Stainless steel
Shaft	Stainless steel
Shaft seal	CVPFF
Gasket material	NBR
Impeller	Stainless steel

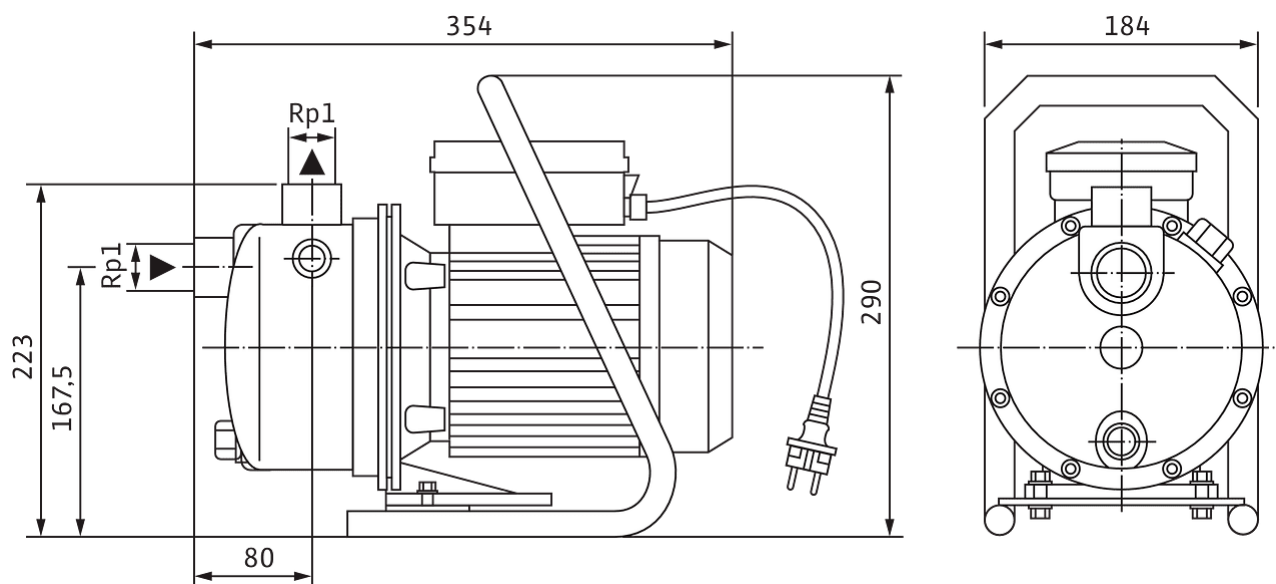
Installation dimensions

Pipe connection on the suction side DNs	G 1
Pipe connection on the discharge side DNd	G 1

Pump curves

Dimensions and dimensions drawings

Jet-WJ



Tender text

- Self-priming single stage jet pump for water supply, irrigation and rainwater re-use applications.
- Self-priming capacity up to 8m thanks to integrated Venturi system.
- The pump is easy to use thanks to its embedded ON/OFF switch.
- Wilo-WJ is supplied with integrated handle, Wilo-WJ-X is supplied without handle.
- Ready for connection thanks to its already connected 2 meters electrical cable with shock-proof Schuko plug.
- Connection via terminal box for three-phase versions.
- All parts that come into contact with the fluid are corrosion-proof.

Materials

Pump housing	Stainless steel
Shaft	Stainless steel
Shaft seal	CVPFF
Gasket material	NBR
Impeller	Stainless steel

Operating Data

Min. fluid temperature T_{\min}	5 °C
Max. fluid temperature T_{\max}	35 °C
Maximum operating pressure p	10.0 bar
Pressure port	G 1
Max. ambient temperature T_{\max}	40 °C

Motor data

Mains connection	1~230 V, 50 Hz
Voltage tolerance	±6 %
Rated power P_2	0.75 kW
Rated current I_N	5.2 A
Rated speed n	2900 1/min
Insulation class	B
Protection class	IP44

Installation dimensions

Pipe connection on the suction side DN_s	G 1
Pipe connection on the discharge side DN_d	G 1

Ordering information

Net weight, approx. m	10.6 kg
Brand	Wilo
Product description	Jet WJ 203 (1~230 V)
Article number	4081225



Similar to figure

Data sheet

Hydraulic data

Maximum operating pressure P_N	6 bar
Pressure port	G 1
Max. delivery head H	43 m
Min. fluid temperature T_{min}	5 °C
Max. fluid temperature T_{max}	35 °C
Min. ambient temperature T_{min}	-15 °C
Max. ambient temperature T_{max}	40 °C

Motor data

Mains connection	1~230 V, 50 Hz
Voltage tolerance	±6 %
Rated power P_2	0.75 kW
Rated current I_N	5.2 A
Rated speed n	2900 1/min
Insulation class	B
Protection class motor	IP44

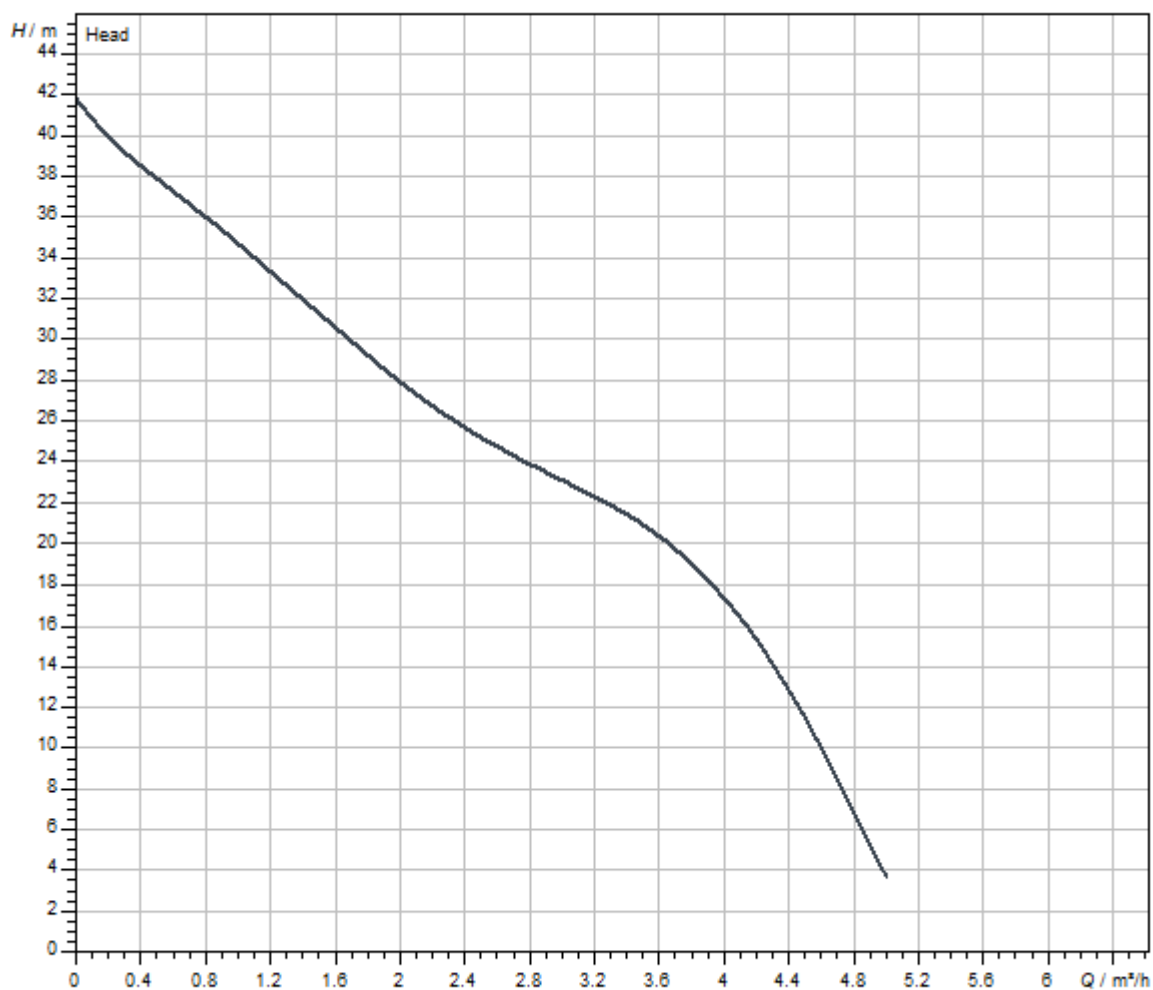
Materials

Pump housing	Stainless steel
Shaft	Stainless steel
Shaft seal	CVPFF
Gasket material	NBR
Impeller	Stainless steel

Installation dimensions

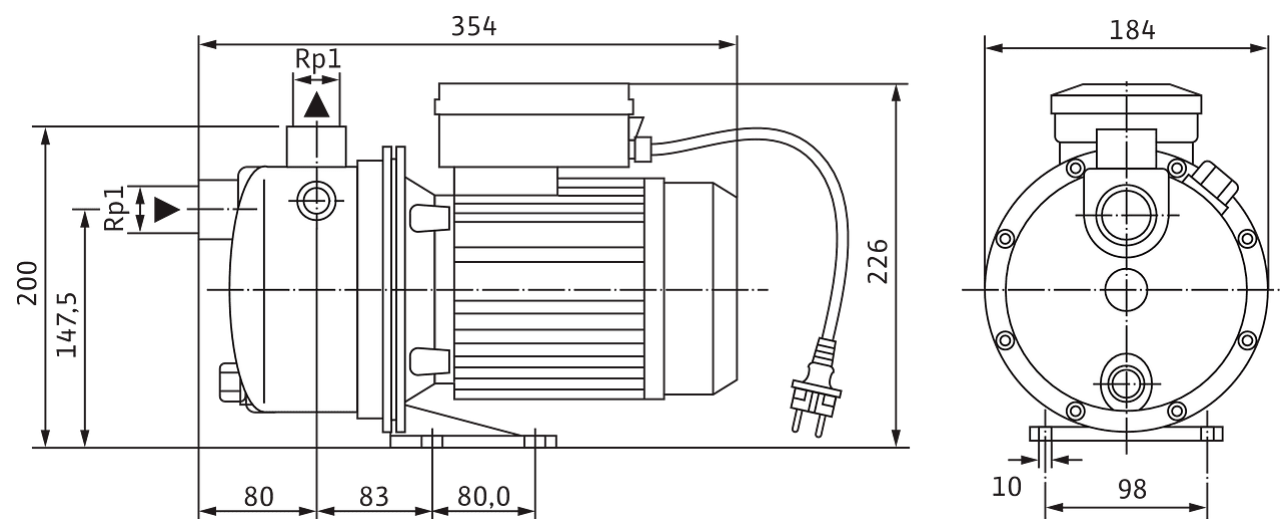
Pipe connection on the suction side DNs	G 1
Pipe connection on the discharge side DNd	G 1

Pump curves



Dimensions and dimensions drawings

Jet-WJ



Tender text

- Self-priming single stage jet pump for water supply, irrigation and rainwater re-use applications.
- Self-priming capacity up to 8m thanks to integrated Venturi system.
- The pump is easy to use thanks to its embedded ON/OFF switch.
- Wilo-WJ is supplied with integrated handle, Wilo-WJ-X is supplied without handle.
- Ready for connection thanks to its already connected 2 meters electrical cable with shock-proof Schuko plug.
- Connection via terminal box for three-phase versions.
- All parts that come into contact with the fluid are corrosion-proof.

Materials

Pump housing	Stainless steel
Shaft	Stainless steel
Shaft seal	CVPFF
Gasket material	NBR
Impeller	Stainless steel

Operating Data

Min. fluid temperature T_{\min}	5 °C
Max. fluid temperature T_{\max}	35 °C
Maximum operating pressure p	10.0 bar
Pressure port	G 1
Max. ambient temperature T_{\max}	40 °C

Motor data

Mains connection	1~230 V, 50 Hz
Voltage tolerance	±6 %
Rated power P_2	0.75 kW
Rated current I_N	5.2 A
Rated speed n	2900 1/min
Insulation class	B
Protection class	IP44

Installation dimensions

Pipe connection on the suction side DN_s	G 1
Pipe connection on the discharge side DN_d	G 1

Ordering information

Net weight, approx. m	9.9 kg
Brand	Wilo
Product description	Jet WJ 203 X (1~230 V)
Article number	4081222



Similar to figure

Data sheet

Hydraulic data

Maximum operating pressure P_N	6 bar
Pressure port	G 1
Max. delivery head H	43 m
Min. fluid temperature T_{min}	5 °C
Max. fluid temperature T_{max}	35 °C
Min. ambient temperature T_{min}	-15 °C
Max. ambient temperature T_{max}	40 °C

Motor data

Mains connection	3~230 V, 3~400 V, 50 Hz
Voltage tolerance	±6 %
Rated power P_2	0.75 kW
Rated current I_N	3.1 A
Rated speed n	2900 1/min
Insulation class	B
Protection class motor	IP44

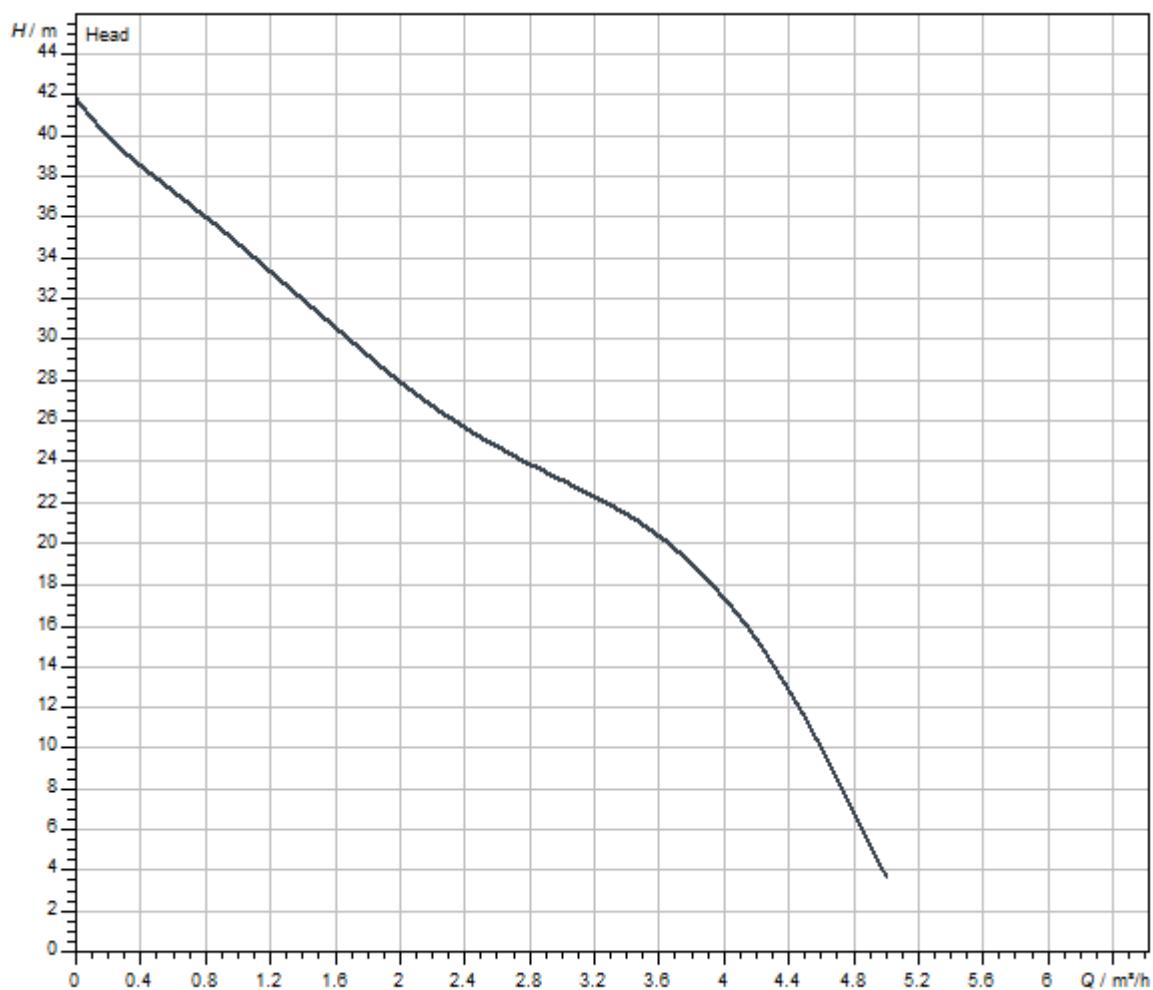
Materials

Pump housing	Stainless steel
Shaft	Stainless steel
Shaft seal	CVPFF
Gasket material	NBR
Impeller	Stainless steel

Installation dimensions

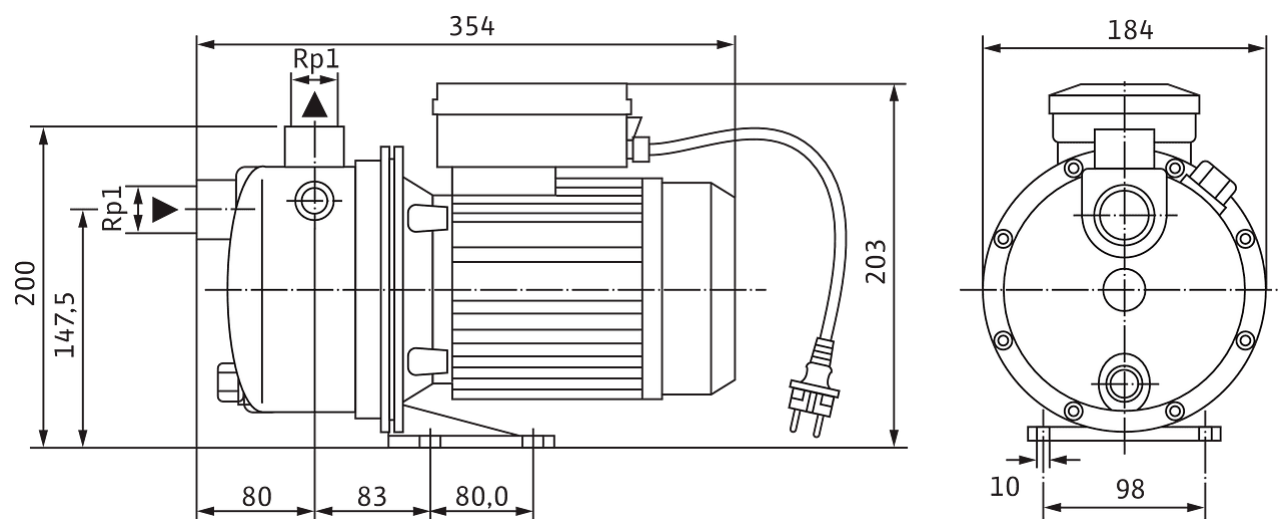
Pipe connection on the suction side DNs	G 1
Pipe connection on the discharge side DNd	G 1

Pump curves



Dimensions and dimensions drawings

Jet-WJ



Tender text

- Self-priming single stage jet pump for water supply, irrigation and rainwater re-use applications.
- Self-priming capacity up to 8m thanks to integrated Venturi system.
- The pump is easy to use thanks to its embedded ON/OFF switch.
- Wilo-WJ is supplied with integrated handle, Wilo-WJ-X is supplied without handle.
- Ready for connection thanks to its already connected 2 meters electrical cable with shock-proof Schuko plug.
- Connection via terminal box for three-phase versions.
- All parts that come into contact with the fluid are corrosion-proof.

Materials

Pump housing	Stainless steel
Shaft	Stainless steel
Shaft seal	CVPFF
Gasket material	NBR
Impeller	Stainless steel

Operating Data

Min. fluid temperature T_{\min}	5 °C
Max. fluid temperature T_{\max}	35 °C
Maximum operating pressure p	10.0 bar
Pressure port	G 1
Max. ambient temperature T_{\max}	40 °C

Motor data

Mains connection	3~230 V, 3~400 V, 50 Hz
Voltage tolerance	±6 %
Rated power P_2	0.75 kW
Rated current I_N	3.1 A
Rated speed n	2900 1/min
Insulation class	B
Protection class	IP44

Installation dimensions

Pipe connection on the suction side DNs	G 1
Pipe connection on the discharge side DNd	G 1

Ordering information

Net weight, approx. m	9.6 kg
Brand	Wilo
Product description	Jet WJ 203 X (3~230/400 V)
Article number	4212734



Similar to figure

Data sheet

Hydraulic data

Maximum operating pressure P_N	6 bar
Pressure port	G 1
Max. delivery head H	50 m
Min. fluid temperature T_{min}	5 °C
Max. fluid temperature T_{max}	35 °C
Min. ambient temperature T_{min}	-15 °C
Max. ambient temperature T_{max}	40 °C

Motor data

Mains connection	1~230 V, 50 Hz
Voltage tolerance	±6 %
Rated power P_2	1 kW
Rated current I_N	6.2 A
Rated speed n	2900 1/min
Insulation class	B
Protection class motor	IP44

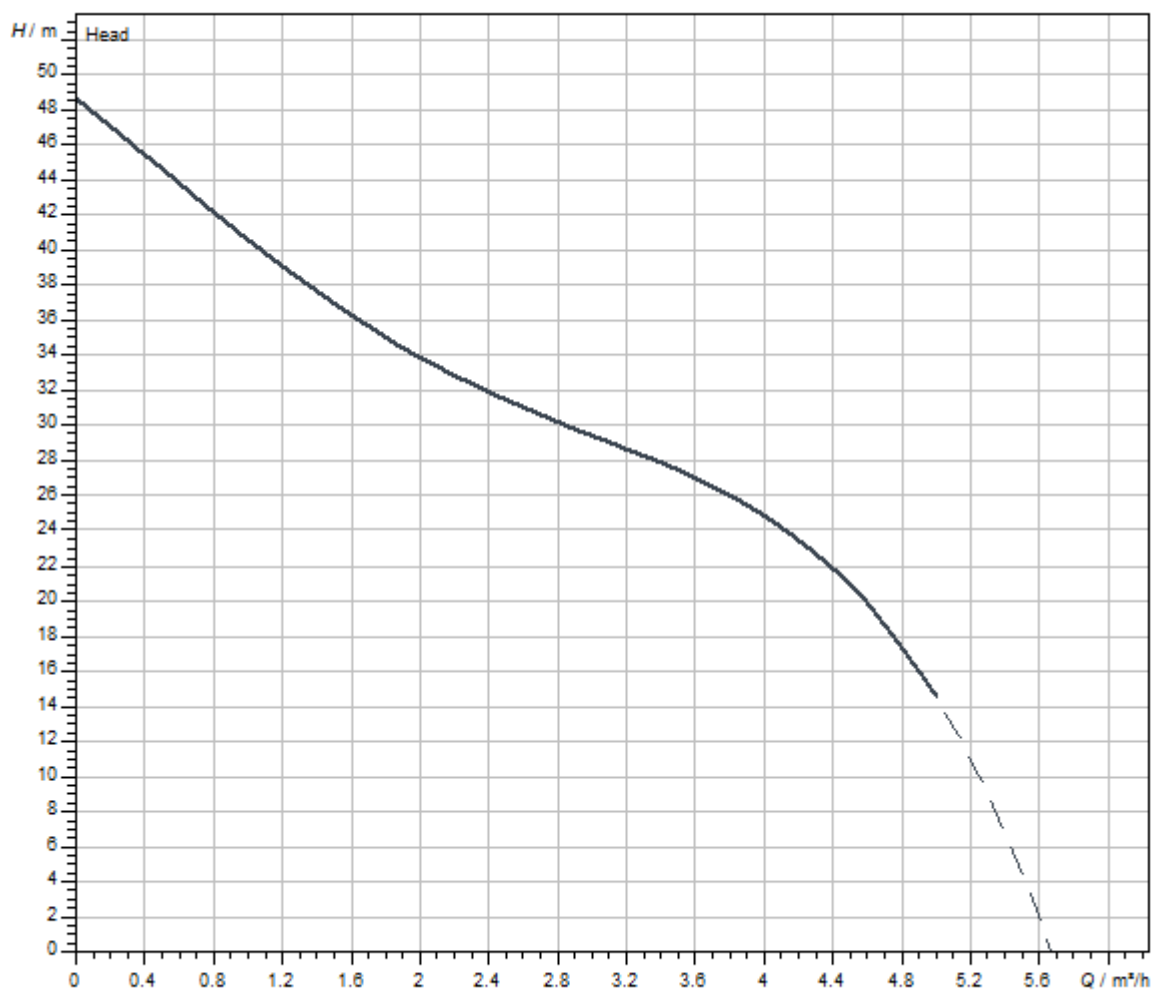
Materials

Pump housing	Stainless steel
Shaft	Stainless steel
Shaft seal	CVPFF
Gasket material	NBR
Impeller	Stainless steel

Installation dimensions

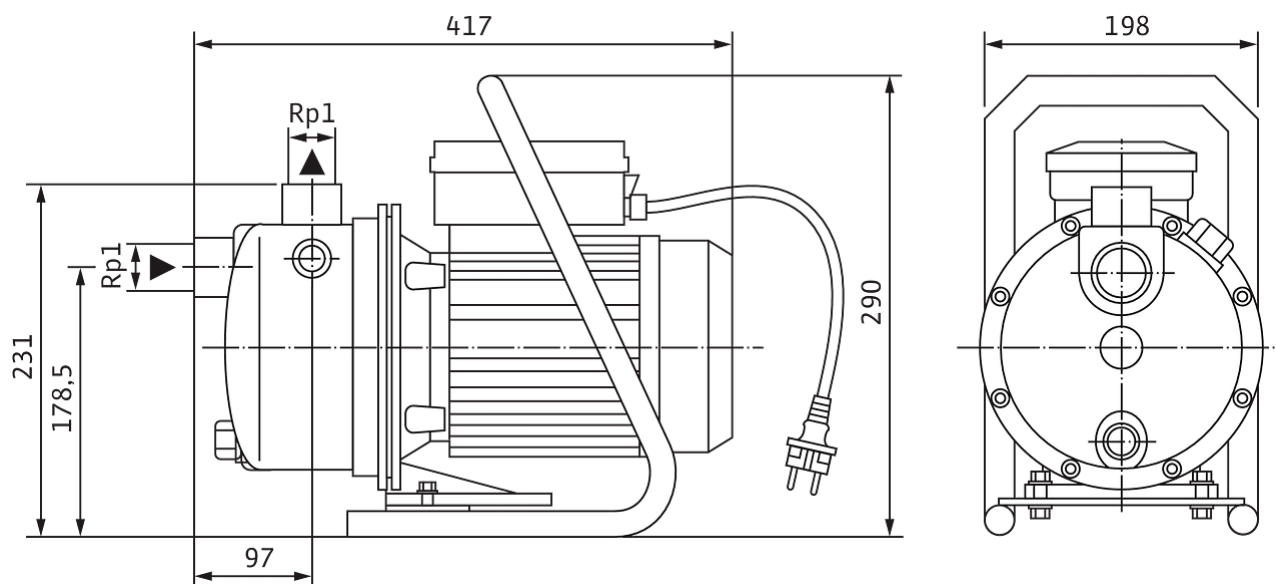
Pipe connection on the suction side DNs	G 1
Pipe connection on the discharge side DNd	G 1

Pump curves



Dimensions and dimensions drawings

Jet-WJ



Tender text

- Self-priming single stage jet pump for water supply, irrigation and rainwater re-use applications.
- Self-priming capacity up to 8m thanks to integrated Venturi system.
- The pump is easy to use thanks to its embedded ON/OFF switch.
- Wilo-WJ is supplied with integrated handle, Wilo-WJ-X is supplied without handle.
- Ready for connection thanks to its already connected 2 meters electrical cable with shock-proof Schuko plug.
- Connection via terminal box for three-phase versions.
- All parts that come into contact with the fluid are corrosion-proof.

Materials

Pump housing	Stainless steel
Shaft	Stainless steel
Shaft seal	CVPFF
Gasket material	NBR
Impeller	Stainless steel

Operating Data

Min. fluid temperature T_{\min}	5 °C
Max. fluid temperature T_{\max}	35 °C
Maximum operating pressure p	10.0 bar
Pressure port	G 1
Max. ambient temperature T_{\max}	40 °C

Motor data

Mains connection	1~230 V, 50 Hz
Voltage tolerance	±6 %
Rated power P_2	1 kW
Rated current I_N	6.2 A
Rated speed n	2900 1/min
Insulation class	B
Protection class	IP44

Installation dimensions

Pipe connection on the suction side DN_s	G 1
Pipe connection on the discharge side DN_d	G 1

Ordering information

Net weight, approx. m	12 kg
Brand	Wilo
Product description	Jet WJ 204 (1~230 V)
Article number	4144401



Similar to figure

Data sheet

Hydraulic data

Maximum operating pressure P_N	6 bar
Pressure port	G 1
Max. delivery head H	50 m
Min. fluid temperature T_{min}	5 °C
Max. fluid temperature T_{max}	35 °C
Min. ambient temperature T_{min}	-15 °C
Max. ambient temperature T_{max}	40 °C

Motor data

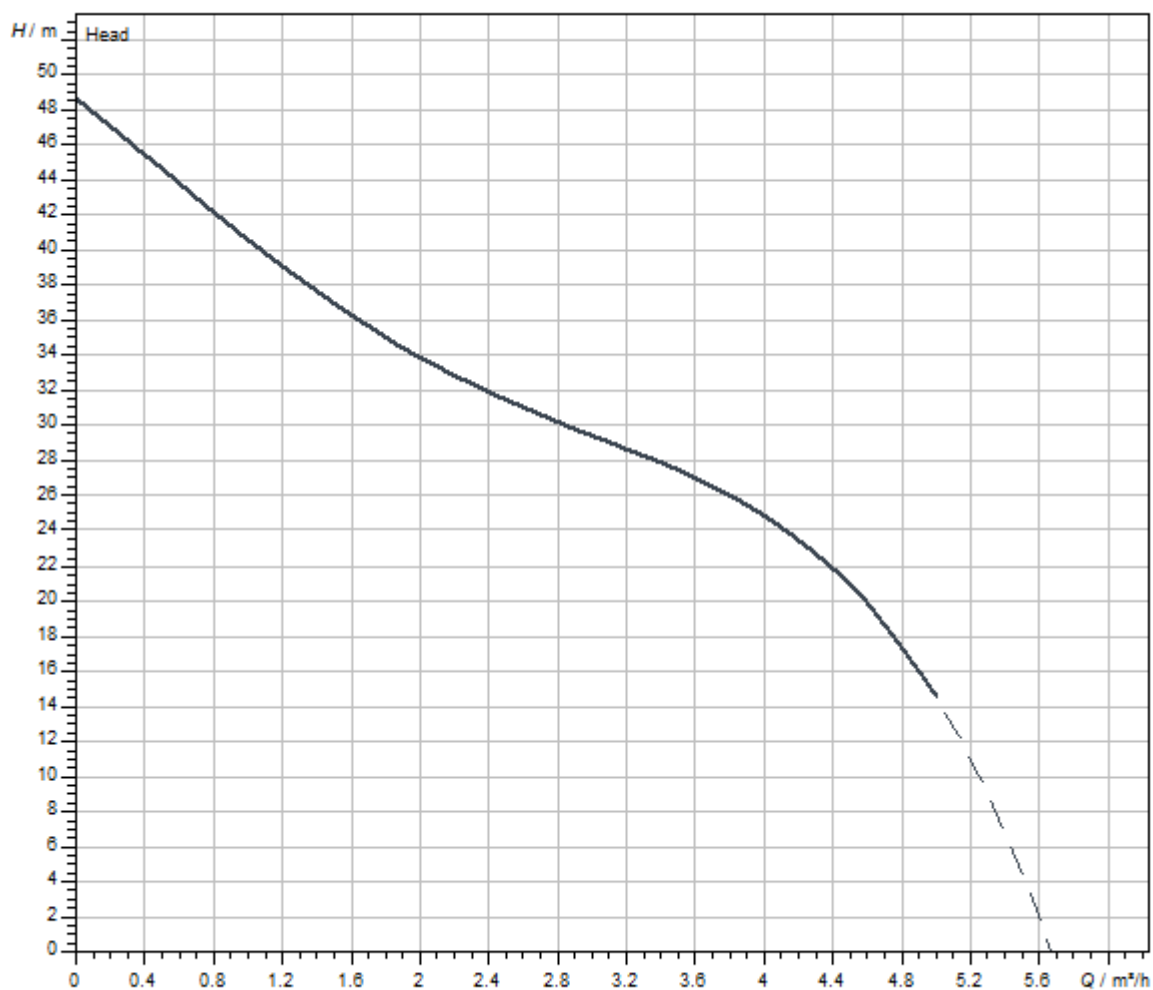
Mains connection	1~230 V, 50 Hz
Voltage tolerance	±6 %
Rated power P_2	1 kW
Rated current I_N	6.2 A
Rated speed n	2900 1/min
Insulation class	B
Protection class motor	IP44

Materials

Pump housing	Stainless steel
Shaft	Stainless steel
Shaft seal	CVPFF
Gasket material	NBR
Impeller	Stainless steel

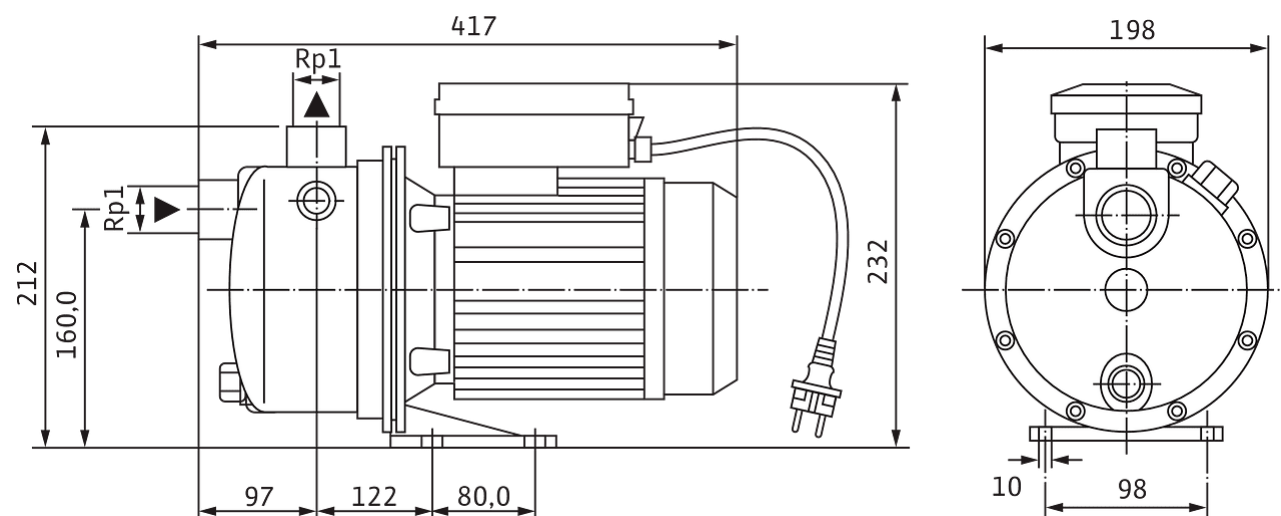
Installation dimensions

Pipe connection on the suction side DNs	G 1
Pipe connection on the discharge side DNd	G 1

Pump curves

Dimensions and dimensions drawings

Jet-WJ



Tender text

- Self-priming single stage jet pump for water supply, irrigation and rainwater re-use applications.
- Self-priming capacity up to 8m thanks to integrated Venturi system.
- The pump is easy to use thanks to its embedded ON/OFF switch.
- Wilo-WJ is supplied with integrated handle, Wilo-WJ-X is supplied without handle.
- Ready for connection thanks to its already connected 2 meters electrical cable with shock-proof Schuko plug.
- Connection via terminal box for three-phase versions.
- All parts that come into contact with the fluid are corrosion-proof.

Materials

Pump housing	Stainless steel
Shaft	Stainless steel
Shaft seal	CVPFF
Gasket material	NBR
Impeller	Stainless steel

Operating Data

Min. fluid temperature T_{\min}	5 °C
Max. fluid temperature T_{\max}	35 °C
Maximum operating pressure p	10.0 bar
Pressure port	G 1
Max. ambient temperature T_{\max}	40 °C

Motor data

Mains connection	1~230 V, 50 Hz
Voltage tolerance	±6 %
Rated power P_2	1 kW
Rated current I_N	6.2 A
Rated speed n	2900 1/min
Insulation class	B
Protection class	IP44

Installation dimensions

Pipe connection on the suction side DN_s	G 1
Pipe connection on the discharge side DN_d	G 1

Ordering information

Net weight, approx. m	11.1 kg
Brand	Wilo
Product description	Jet WJ 204 X (1~230 V)
Article number	4143999



Similar to figure

Data sheet

Hydraulic data

Maximum operating pressure P_N	6 bar
Pressure port	G 1
Max. delivery head H	50 m
Min. fluid temperature T_{min}	5 °C
Max. fluid temperature T_{max}	35 °C
Min. ambient temperature T_{min}	-15 °C
Max. ambient temperature T_{max}	40 °C

Motor data

Mains connection	3~230 V, 3~400 V, 50 Hz
Voltage tolerance	±6 %
Rated power P_2	1 kW
Rated current I_N	4.3 A
Rated speed n	2900 1/min
Insulation class	B
Protection class motor	IP44

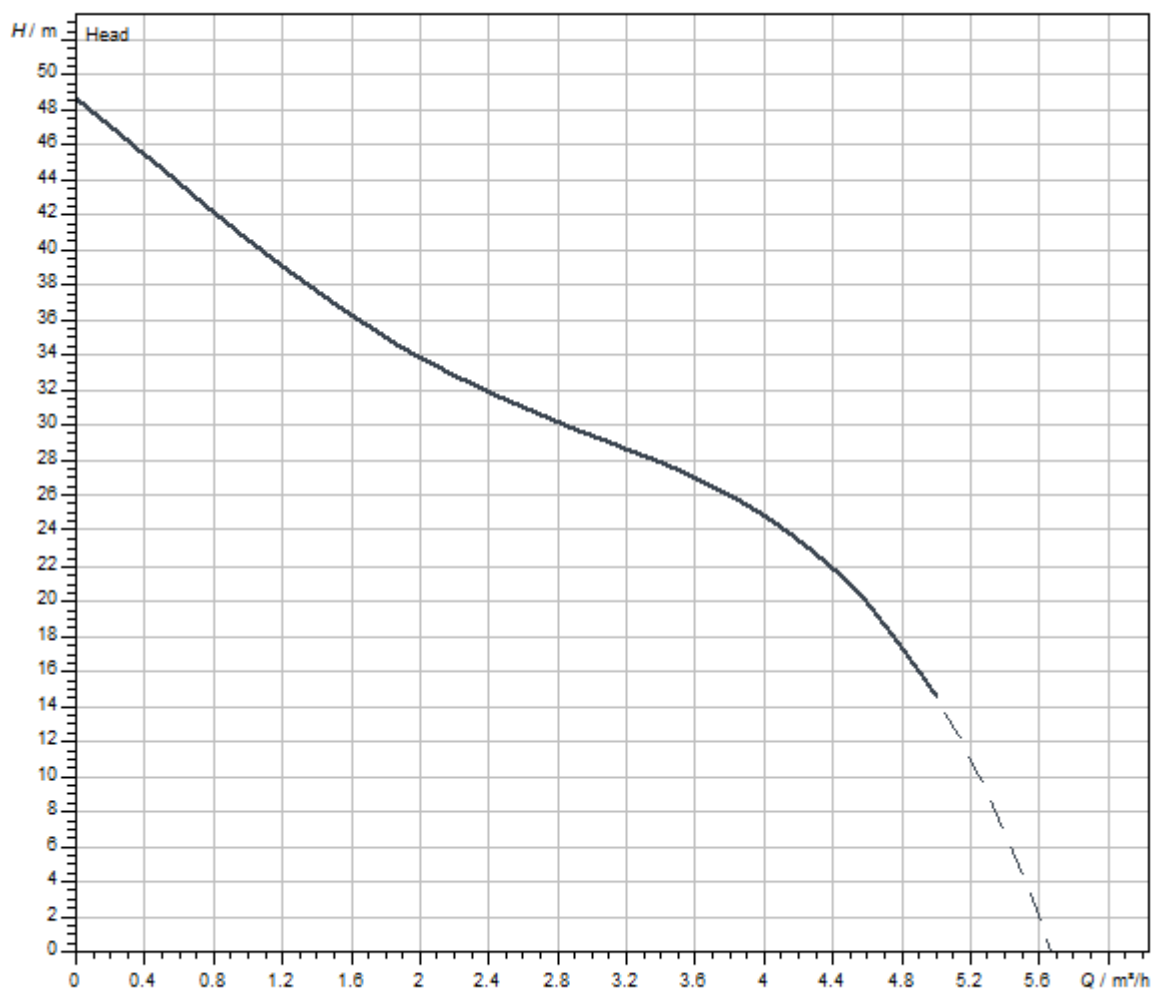
Materials

Pump housing	Stainless steel
Shaft	Stainless steel
Shaft seal	CVPFF
Gasket material	NBR
Impeller	Stainless steel

Installation dimensions

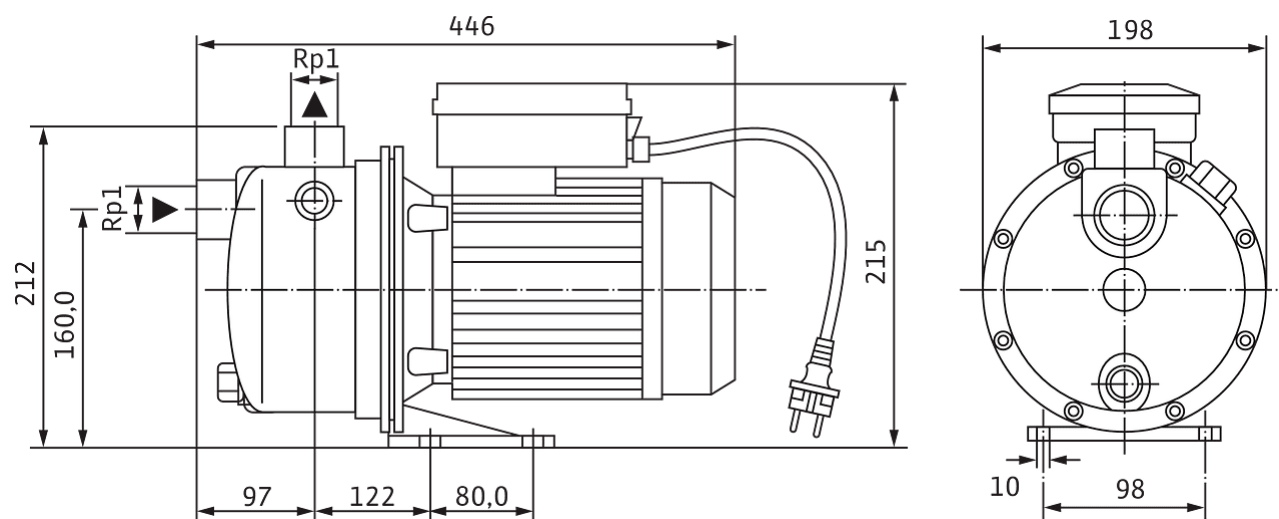
Pipe connection on the suction side DNs	G 1
Pipe connection on the discharge side DNd	G 1

Pump curves



Dimensions and dimensions drawings

Jet-WJ



Tender text

- Self-priming single stage jet pump for water supply, irrigation and rainwater re-use applications.
- Self-priming capacity up to 8m thanks to integrated Venturi system.
- The pump is easy to use thanks to its embedded ON/OFF switch.
- Wilo-WJ is supplied with integrated handle, Wilo-WJ-X is supplied without handle.
- Ready for connection thanks to its already connected 2 meters electrical cable with shock-proof Schuko plug.
- Connection via terminal box for three-phase versions.
- All parts that come into contact with the fluid are corrosion-proof.

Materials

Pump housing	Stainless steel
Shaft	Stainless steel
Shaft seal	CVPFF
Gasket material	NBR
Impeller	Stainless steel

Operating Data

Min. fluid temperature T_{\min}	5 °C
Max. fluid temperature T_{\max}	35 °C
Maximum operating pressure p	10.0 bar
Pressure port	G 1
Max. ambient temperature T_{\max}	40 °C

Motor data

Mains connection	3~230 V, 3~400 V, 50 Hz
Voltage tolerance	±6 %
Rated power P_2	1 kW
Rated current I_N	4.3 A
Rated speed n	2900 1/min
Insulation class	B
Protection class	IP44

Installation dimensions

Pipe connection on the suction side DN_s	G 1
Pipe connection on the discharge side DN_d	G 1

Ordering information

Net weight, approx. m	13.5 kg
Brand	Wilo
Product description	Jet WJ 204 X (3~230/400 V)
Article number	4212735