

wilo**OUTLINE
DRAWING**

Sheet No.

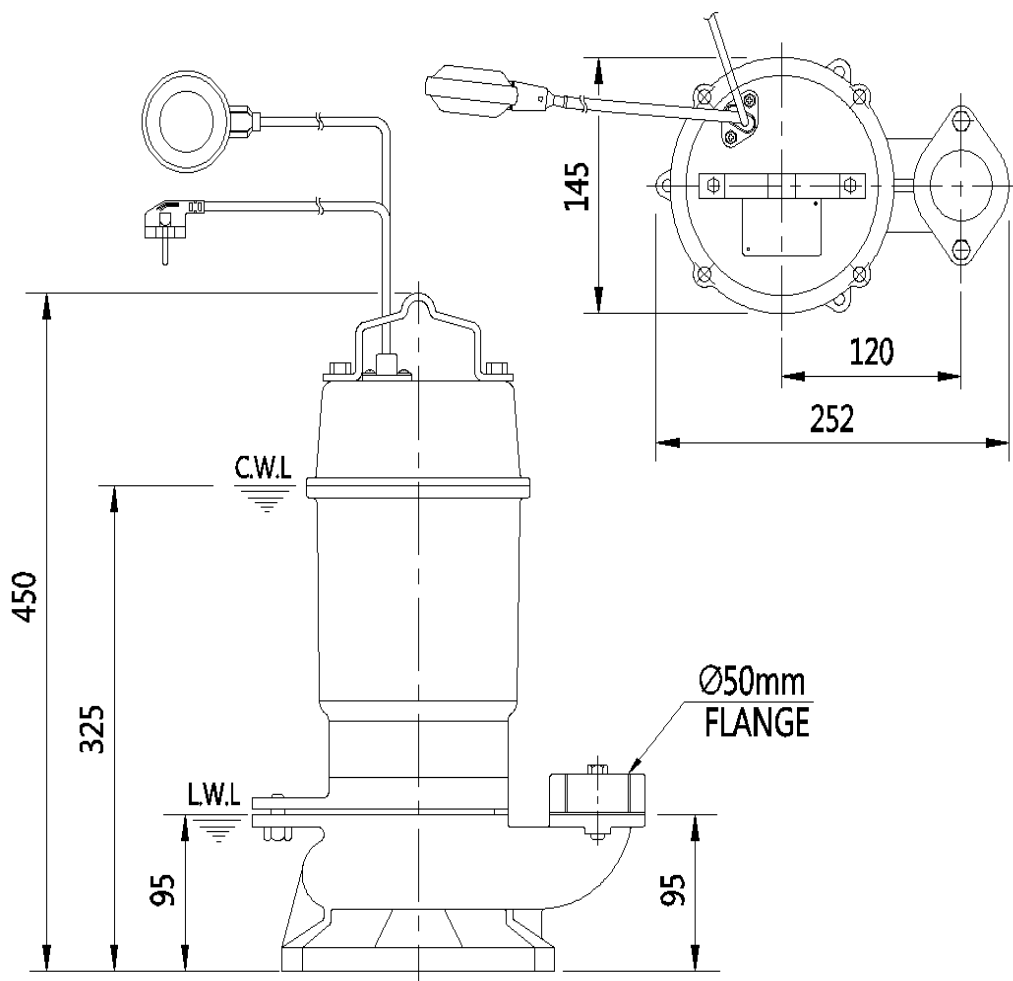
CUSTOMER

ITEM No.

DATE

SPECIFICATION

PUMP	CAPACITY	ℓ/min	250	MOTOR	OUTPUT	W	950
	TOTAL HEAD	m	6		VOLTAGE	V	220
	SUCTION BORE	mm	—		FREQUENCY	Hz	60
	DISCHARGE BORE	mm	Ø 50		No. OF REVOLUTION	r. p. m	3,450
	LIQUID	WATER			TYPE	CLOSED	
	MAKER	WILO Pumps Ltd.			MAKER	WILO Pumps Ltd.	



C. W. L. : Continuous Running

Water Level

L. W. L. : Least Running

Water Level

TYPE

DRAINAGE PUMP
(VOLUTE, NON AUTO)

MODEL

PDV-L900MA

SERVICE

SCALE: N/S

3rd. ANGLE PROJECT

wilo

**OUTLINE DRAWING
of PDV-L TYPE with**

Sheet No.

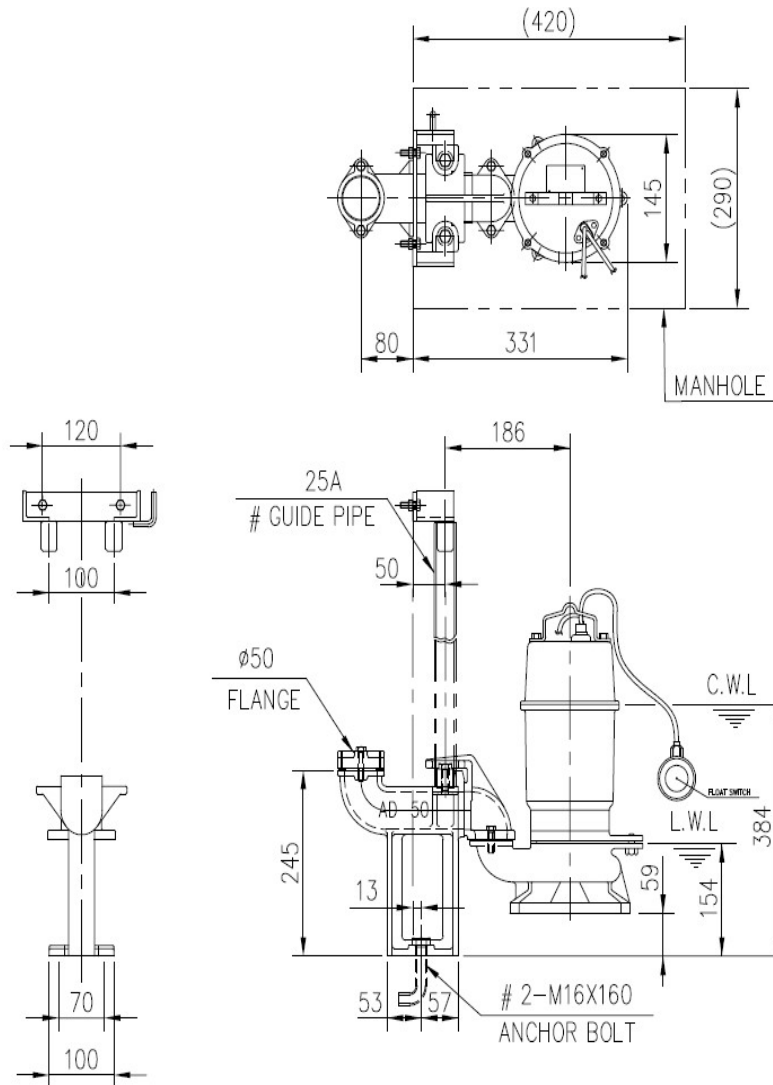
CUSTOMER

ITEM No.

DATE

SPECIFICATION

PUMP	CAPACITY	ℓ/min	250	MOTOR	OUTPUT	W	950
	TOTAL HEAD	m	6		VOLTAGE	V	220
	SUCTION BORE	mm	—		FREQUENCY	Hz	60
	DISCHARGE BORE	mm	Ø 50		No. OF REVOLUTION	r. p. m	3,450
	LIQUID	WATER			TYPE	CLOSED	
	MAKER	WILO Pumps Ltd.			MAKER	WILO Pumps Ltd.	



C. W. L : Continuous Running

Water Level

L. W. L : Least Running

Water Level

TYPE

DRAINAGE PUMP

(VORTEX, NON AUTO)

MODEL

PDV-L900MA + AD-50

SERVICE

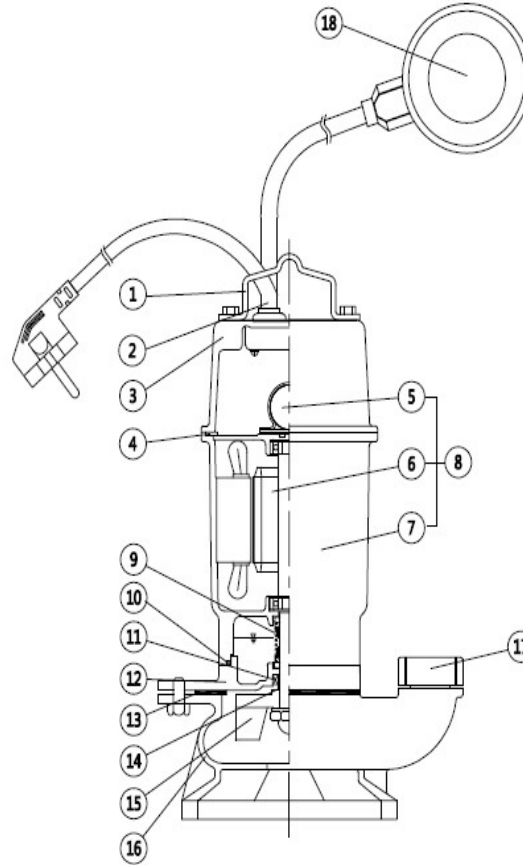
SCALE: N/S

3rd. ANGLE PROJECT

wilo

SECTIONAL DRAWING

Sheet No.	
CUSTOMER	
ITEM No.	
DATE	



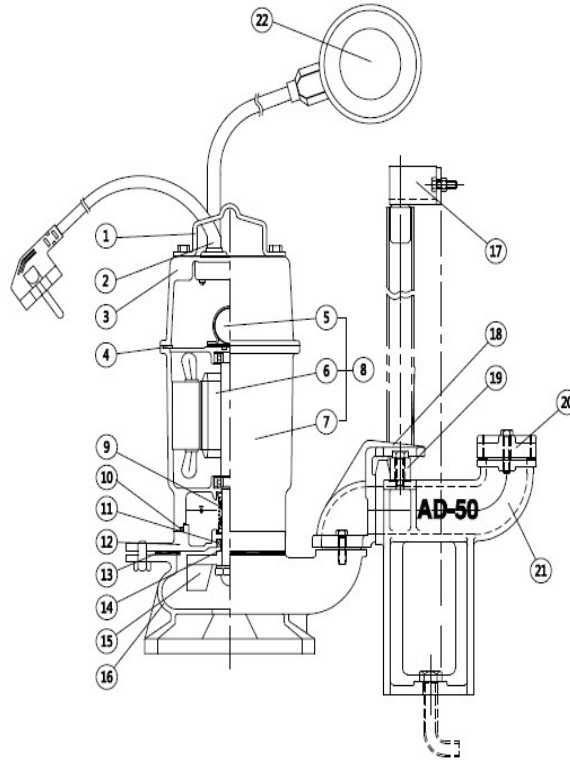
NO.	PARTS NAME	MATERIALS			Q' ty (EA)	NO.	PARTS NAME	MATERIALS			Q' ty (EA)
		KS	AISI	DIN				KS	AISI	DIN	
1	HANDLE	ABS	-	-	1	10	O-RING	NBR710	-	-	1
2	CABLE ASSY'	IEC57	-	-	1	11	OIL CASING	GC150	Class No 25	GG15	1
3	HEAD COVER	GC150	Class No 25	GG15	1	12	OIL SEAL	NBR709	-	-	1
4	GASKET	NBR607	-	-	1	13	GASKET	NBR707	-	-	1
5	CAPACITOR	-	-	-	1	14	SLEEVE	STS304	-	-	1
6	ROTOR ASS'Y	-	-	-	1	15	IMPELLER	GC200	Class No 30	GG20	1
7	FRAME ASS'Y	-	-	-	1	16	CASING	GC200	Class No 30	GG20	1
8	MOTOR ASS'Y	-	-	-	1	17	FLANGE	GC200	Class No 30	GG20	1
9	MECHANICAL SEAL	SiC+SiC	-	-	1	18	FLOAT SWITCH	-	-	-	1

TYPE	DRAINAGE PUMP (VORTEX, NON AUTO)
MODEL	PDV-L900MA
SCALE: N/S	3rd. ANGLE PROJECT

wilo

**SECTIONAL
DRAWING
of PDV-L TYPE**

Sheet No.	
CUSTOMER	
ITEM No.	
DATE	

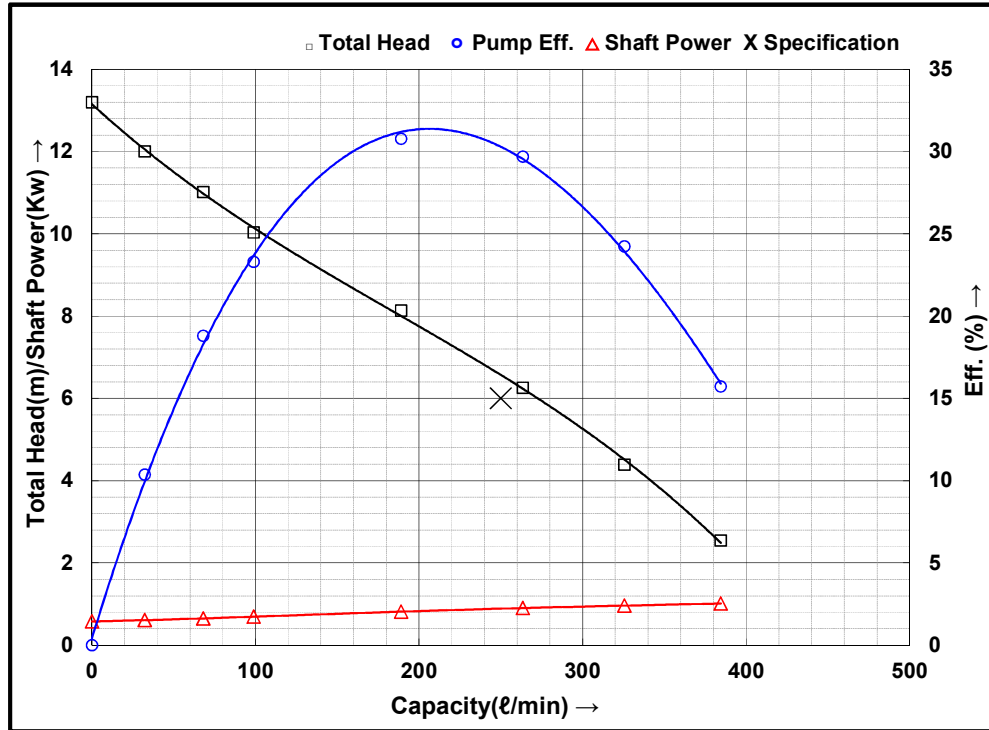


NO.	PARTS NAME	MATERIALS			Q' ty (EA)	NO.	PARTS NAME	MATERIALS			Q' ty (EA)
		KS	AISI	DIN				KS	AISI	DIN	
1	HANDLE	ABS	-	-	1	12	OIL SEAL	NBR709	-	-	1
2	CABLE ASSY'	IEC57	-	-	1	13	GASKET	NBR707	-	-	1
3	HEAD COVER	GC150	Class No 25	GG15	1	14	SLEEVE	STS304	-	-	1
4	GASKET	NBR607	-	-	1	15	IMPELLER	GC200	Class No 30	GG20	1
5	CAPACITOR	-	-	-	1	16	CASING	GC200	Class No 30	GG20	1
6	ROTOR ASS'Y	-	-	-	1	17	GUIDE HOLDER	SS400	-	-	1
7	FRAME ASS'Y	-	-	-	1	18	SLIDE	GC200	Class No 30	GG20	1
8	MOTOR ASS'Y	-	-	-	1	19	GUIDE RING	STS304	-	-	2
9	MECHANICAL SEAL	SiC+SiC	-	-	1	20	FLANGE	GGD450	-	-	1
10	O-RING	NBR710	-	-	1	21	CONNECTOR	GC200	Class No 30	GG20	1
11	OIL CASING	GC150	Class No 25	GG15	1	22	FLOAT SWITCH	-	-	-	1

TYPE	DRAINAGE PUMP (VORTEX, NON AUTO)
MODEL	PDV-L900MA + AD-50
SERVICE	
SCALE: N/S	3rd. ANGLE PROJECT

PUMP TEST REPORT

■ PERFORMANCE CURVE



■ PERFORMANCE DATA

Capacity (ℓ/min)	0.00	32.30	68.00	98.90	189.00	263.50	325.50	384.50
Dis. Head (m)	12.20	11.00	10.00	9.00	7.00	5.00	3.00	1.00
Suc. Head (m)	0.00	0.00	0.00	0.00	0.00	0.00	0.00	0.00
Speed Hz (m)	0.00	0.00	0.02	0.04	0.13	0.26	0.39	0.54
Total Hea (m)	13.20	12.00	11.02	10.04	8.13	6.26	4.39	2.54
Water Pov (kW)	0.00	0.06	0.12	0.16	0.25	0.27	0.23	0.16
Shaft Pow (kW)	0.58	0.61	0.65	0.69	0.81	0.90	0.96	1.01
Pump Eff. (%)	0.00	10.37	18.80	23.30	30.77	29.69	24.24	15.72
Speed (rpm)								
Voltage (V)	220	220	220	220	220	220	220	220
Current (A)	3.71	3.88	4.15	4.39	5.04	5.59	5.99	6.29
Motor Inp (kW)	0.784	0.826	0.880	0.941	1.103	1.226	1.302	1.374
Motor Eff. (%)	73.8	73.8	73.8	73.8	73.8	73.8	73.8	73.8

■ SPECIFICATION FOR PUMP & MOTOR

PUMP SPECIFICATION		MOTOR SPECIFICATION			TEST CONDITION		
Capacity	250 (ℓ/min)	Phase (ϕ)	1	Output (kW)	0.95	/Pipe (mm)/Pipe (mmH)/Diff. (m)	
Total Hea	6 (m)	Pole (P)	2	Freq. (Hz)	60		50.0 1.00
Efficiency	(%)	Volt. (V)	220	Current (A)	6.4	low Mete	R.T (°C) W.T (°C)
I/P Out-Dia	(mm)	Eff. (%)	73.8	Maker	WILO	Magnetic	22 18
Item No.	N.A	Serial No.		Inspector	KIM.J.O	Run (Hr)	B/R (°C) Test Date
Model	PDV-L900MA	Customer				2	2017.05.04
Checked By				Approved By			

wilo Pumps Ltd.